

# SONY®

## Stereo Headphones

Operating Instructions  
使用説明書  
사용설명서

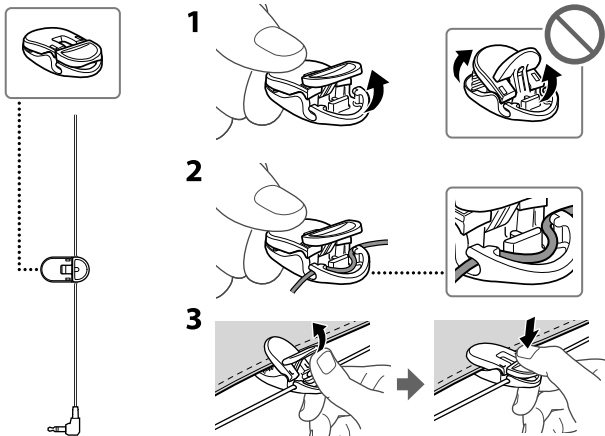


\* 4 4 4 3 1 0 1 3 1 \* (1)

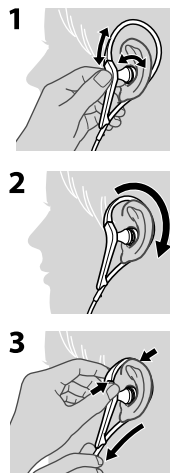
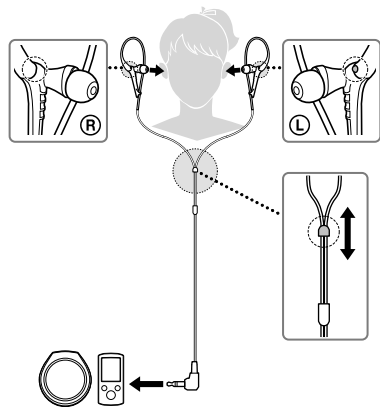
4-443-101-31(1)

MDR-AS400EX

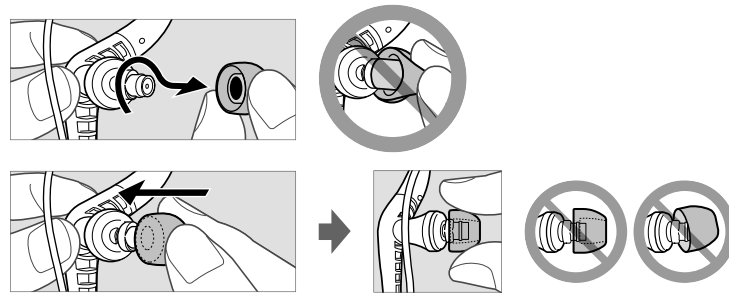
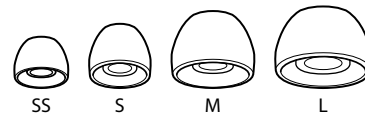
### Clip / 線夾 / 클립



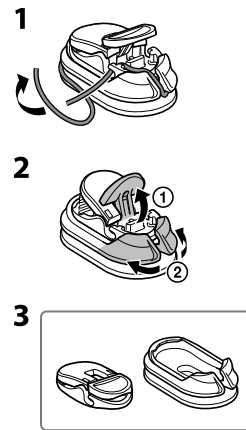
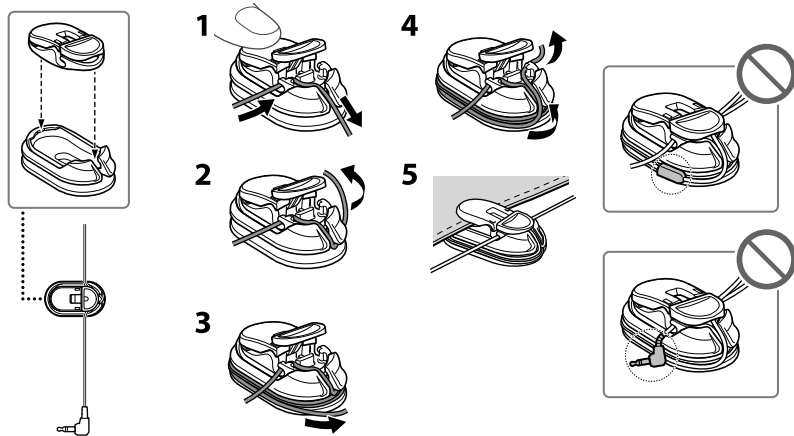
### How to use / 使用方法 / 사용 방법



### Earbuds / 耳塞 / 이어버드



### Cord adjuster / 導線長度調節器 / 코드 길이 조정 장치



English	Stereo headphones
---------	-------------------

## Specifications

**Type:** Closed, dynamic

**Driver unit:** 9 mm, dome type (CCAW adopted)

**Power handling capacity:** 100 mW (IEC\*)

**Impedance:** 16 Ω at 1 kHz

**Sensitivity:** 103 dB/mW

**Frequency response:** 5 Hz – 24,000 Hz

**Cord:** 1.2 m, Litz cord Y-type

**Plug:** Gold-plated L-shaped stereo mini plug

**Mass:** Approx. 10 g (without cord)

**Supplied accessories**

Earbuds: SS (red) (2), S (orange) (2), M (green) (attached to the unit at the factory) (2), L (light blue) (2) / Clip (1) / Cord adjuster (winds cord up to 50 cm) (1) / Carrying pouch (1)

\* IEC = International Electrotechnical Commission
Design and specifications are subject to change without notice.

Optional replacement earbuds can be ordered from your nearest Sony dealer.

한국어	스테레오 헤드폰
-----	----------

--	--

--	--

--	--

한국어	스테레오 헤드폰
-----	----------

--	--

## 주요 제원

**종류:** 캐세형, 다이내믹

**드라이버 장치:** 9 mm, 돔 형식(CCAW 채택)

**전원 용량:** 100 mW(IEC\*)

**임피던스:** 1 kHz에서 16 Ω

**감도:** 103 dB/mW

**주파수 응답:** 5 Hz - 24,000 Hz

**코드:** 1.2 m, Litz 코드 Y형

**플러그:** L형 금도금 스테레오 미니 플러그

**무게:** 약 10 g(코드 제외)

### 부속품

이어버드: SS(적색) (2), S(주황색) (2), M(녹색) (공장 출하 시에 부착되어 출고됨) (2), L(열은 파란색) (2)/클립(1)/코드 길이 조정 장치(최대 50 cm까지 코드를 감을 수 있음) (1)/휴대용 파워치(1)

\* IEC = 국제 전기 표준 회의
디자인 및 주요 제원은 사전 통보 없이 변경될 수 있습니다.

교체용 이어버드는 가까운 Sony 대리점에서 주문할 수 있습니다.

### Precautions



High volume may affect your hearing. For traffic safety, do not use while driving or cycling.



Install the earbuds firmly. If an earbud accidentally detaches and is left in your ear, it may cause injury.



Keep earbuds clean. To clean the earbuds, wash them with a mild detergent solution.

- Do not wash the headphones.

- Though these headphones are water resistant design, avoid exposing the headphones to excessive water or sweat. Water or sweat entering the headphones may damage them. If the sound from the headphones becomes low or stops, leave the headphones to dry out.

**Note on static electricity**

Static electricity accumulated in the body may cause mild tingling in your ears.

To minimise the effect, wear clothes made from natural materials.

### 繁體中文

繁體中文	立體聲耳機
------	-------

--	--

**規格**

**型式:** 封閉式, 動態

**激勵單元:** 9 mm, 圓頂型 (採用 CCAW)

**功率處理容量:** 100 mW (IEC\*)

**阻抗:** 1 kHz 時 16 Ω

**靈敏度:** 103 dB/mW

**頻率響應:** 5 Hz - 24000 Hz

**導線:** 1.2 m, 絞合線 Y 型

**插頭:** 鍍金 L 型立體聲迷你插頭

**質量:** 約 10 g (不含導線)

**附件**

耳塞: SS (紅色) (2), S (橙色) (2), M (綠色) (出廠時安裝至本裝置) (2), L (淺藍色) (2) / 線夾 (1) / 導線長度調節器 (導線最多纏繞 50 cm) (1) / 攜行袋 (1)

\* IEC = 國際電工委員會

設計和規格如有變更, 恕不另行通知。

可向附近的 Sony 經銷商訂購選購的替換耳塞。

### 注意事項



請保持耳塞清潔。若要清潔耳塞, 請用中性清潔劑溶液清洗。

- 請勿清洗耳機。
- 雖然本耳機採用防水設計, 仍需避免耳機接觸過多的水或汗。水或汗進入耳機可能會導致損壞。如果從耳機輸出的聲音變得微弱或停止, 請將耳機晾乾。

## 靜電注意事項

體內積聚的靜電可能會導致耳朵有輕微刺痛感。穿著天然材料製成的衣服可將此影響減到最少。