

Quick Start Guide
快速入门指南



NWZ-B162/B163/B162F/B163F



©2011 Sony Corporation Printed in China
2011/2

English

About the Manual
 • **Quick Start Guide:** Explains setup, enabling you to import songs to a computer, and to transfer them to the player.
 • **User Guide (HTML document):** Explains advanced features of the player and offers troubleshooting information. The User Guide (HTML document) is stored in the memory of the player. To view the User Guide (HTML document), see “Supplied Items.”

Supplied Items

- Headphones (1)
- Clip (1)
- Quick Start Guide (this manual) (1)
- Software

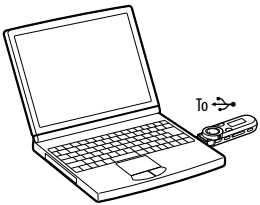
The software is stored in the built-in flash memory of the player, and includes the following items:
 – WALKMAN Guide
 – User Guide, etc.
 For details on how to install, see “How to Install the User Guide.”

Before Connecting the Player to Your Computer

Make sure that the OS is Windows 7, Windows XP (Service Pack 3 or later) or Windows Vista (Service Pack 1 or later), and the installed Windows Media Player version on your computer is 11 or 12.

How to Install the User Guide

1 Connect the player to your computer.



2 Select the following order with the computer.

Select [start] - [My Computer] or [Computer] - [WALKMAN] - [Storage Media].

3 Double-click [Setup.exe].

The install wizard appears.
 • When you execute [Setup.exe], the [Setup.exe] file stored in the [Storage Media] folder of the player is copied to your computer for backup, and WALKMAN Guide is installed to your computer.

4 Follow the on-screen instructions.

After executing [Setup.exe], the WALKMAN Guide shortcut appears on the desktop of your computer.

5 Double-click [WALKMAN Guide] on the desktop to start the WALKMAN Guide.

For details on transferring music, refer to the User Guide included in the WALKMAN Guide.

- Hint**
- You can start the WALKMAN Guide from the [start] menu (displayed by clicking [start]).
 - If you delete the [Setup.exe] file in the player by formatting the built-in flash memory of the player, copy this data from the [Backup] folder on the computer to your player. Then connecting the player to the computer to be installed, follow the above procedure from step 1 to install. The backup data is preserved in the following [C] drive on your computer by the default install setting.
C:\Program Files\Sony\WALKMAN Guide\NWZ-B160\Backup

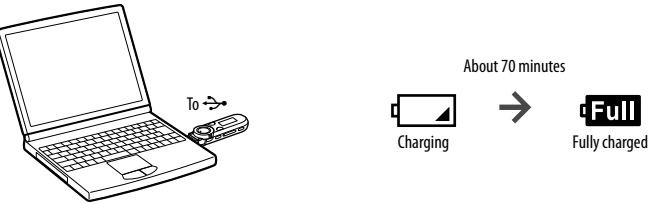
What can you do with the WALKMAN Guide?

- The WALKMAN Guide includes the following items:
- User Guide
The following contents can be viewed in your web browser.
 - Details on how to use the player
 - How to use software to transfer content to the player
 - Troubleshooting
 - Customer Registration Link
 - Customer Support Link
 - Other useful Links
Includes link information, etc., on the download site.
- The bundled items differ depending on the country/region of purchase.

- Hint**
- After executing [Setup.exe] you can use the free space in the [Storage Media] folder more effectively by formatting the built-in flash memory of the player. To format the built-in flash memory of the player, see “To initialize (format) the player.”

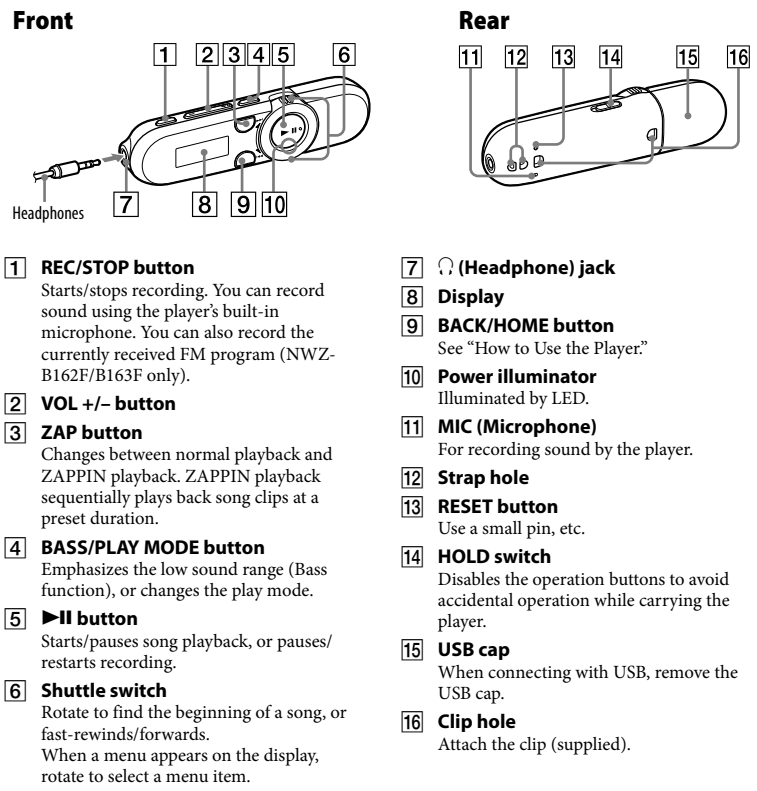
Charging the Battery

The player’s battery is recharged while the player is connected to a running computer.



- Note**
- When you use the player for the first time, or if you have not used the player for a long time, recharge it fully. When charging a depleted battery, the power illuminator blinks clockwise and nothing appears in the display. If the player’s display remains blank for more than 5 minutes, press the RESET button to reset the player.
 - If you turn on the computer, restart the computer, shut down the computer, or wake up from Sleep or Hibernate status while the player is connected to the computer, the player may malfunction. In this case, press the RESET button of the player to reset it. Disconnect the player from the computer before performing these operations.
 - To prevent battery deterioration, charge the battery at least once every half a year or every year.

Parts and Controls



Turning the Player On and Off

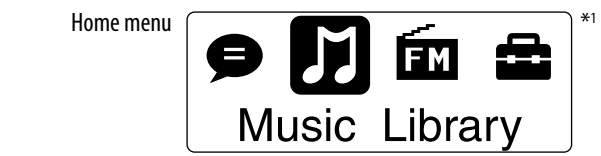
To turn on	Press the ▶ button.
To turn off	Press and hold the ▶ button.

- Hint**
- If song playback is paused and there is no operation for a certain period of time, the player turns off automatically.

How to Use the Player

The Home menu is the starting point of each application.

To display the Home menu	Press and hold the BACK/HOME button.
To select an item	Rotate the shuttle switch to ◀◀▶▶ to select an item, and then press the ▶ button to confirm.
To return to the previous screen	Press the BACK/HOME button.



The icons appear in the Home menu and the color of the selected icon is inverted.

[Voice]	Plays back/deletes sound files recorded with the player’s built-in microphone.
[Music Library]	Plays back transferred songs on the player.
[FM] ¹	Plays FM radio, or plays back/deletes FM radio programs recorded with the player.
[Settings]	Sets the function for music, FM ¹ , voice recording, or player settings.

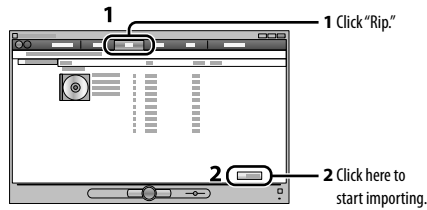
¹[FM] and items related to the [FM] function appear on NWZ-B162F/B163F only.

Importing and Transferring Music

You can transfer songs to the player using Windows Media Player 11 or 12 on your computer. If you use Windows Media Player 10 or less on your computer, install Windows Media Player 11 from the Windows Media Player download site. <http://support.microsoft.com/>

1 Import songs from CDs, etc., to Windows Media Player 11 or 12 on the computer.

For details on how to import songs from CDs, etc., refer to the Help of Windows Media Player 11 or 12. You do not need to re-import songs that have previously been imported to Windows Media Player 11 or 12.

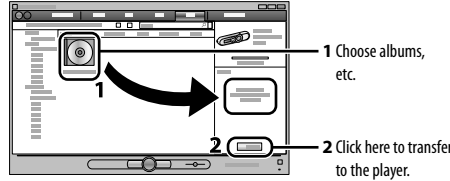


2 Connect the USB connector of the player to your computer.

Insert the USB connector fully.

3 Transfer songs from Windows Media Player 11 or 12 to the player.

[DATA ACCESS] appears in the display while transferring songs to the player.



- Note**
- Do not disconnect the player while files are being transferred. If you do, the file being transferred will be damaged.
 - You cannot transfer contents with copyright protection since the player does not support them.

- Hint**
- You can also transfer data to the player by dragging and dropping in Windows Explorer on your computer.

To delete songs transferred to the player

Connect the player to your computer, and then delete any unnecessary audio files using Windows Media Player 11, 12 or Windows Explorer.

Troubleshooting

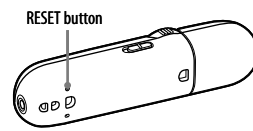
If the player does not function as expected, try the following steps to resolve the issue.

1 Find the symptoms of the issue in “Troubleshooting” in the User Guide (HTML document), and try any corrective actions listed.

On connecting with the computer, see the following “System Requirements (for the player)” and tables.

2 Connect the player to your computer to charge the battery.

You may be able to resolve some issues by charging the battery.



3 Press the RESET button with a small pin, etc.

If you press the RESET button while operating the player, stored data and player settings may be lost. After resetting the player, press the **▶||** button to turn on the player.

4 Check information on the issue in the Help of each software.

5 Look up information on the issue on one of the customer support Web sites.

About the customer support web sites, see “For the latest information.”

6 If the approaches listed above fail to resolve the issue, consult your nearest Sony dealer.

System Requirements (for the player)

- Computer
IBM PC/AT compatible computer preinstalled with the following Windows operating systems^{*1}:
Windows XP Home Edition^{*2} (Service Pack 3 or later) / Windows XP Professional^{*2} (Service Pack 3 or later) / Windows Vista Home Basic (Service Pack 1 or later) / Windows Vista Home Premium (Service Pack 1 or later) / Windows Vista Business (Service Pack 1 or later) / Windows Vista Ultimate (Service Pack 1 or later) / Windows 7 Home Basic / Windows 7 Home Premium / Windows 7 Professional / Windows 7 Ultimate
Not supported by OSs other than above.
^{*1}Excluding OS Versions not supported by Microsoft.
^{*2}Excluding 64-bit OS versions.
 - CPU: Pentium III 450 MHz or higher for Windows XP, Pentium III 800 MHz or higher for Windows Vista, Pentium III 1 GHz or higher for Windows 7
 - RAM: 256 MB or more for Windows XP, 512 MB or more for Windows Vista, 1 GB or more for Windows 7 32-bit versions, 2 GB or more for Windows 7 64-bit versions
 - Hard Disk Drive: 600 MB or more of available space
 - Display:
 - Screen Resolution: 800 × 600 pixels (or higher) (recommended 1,024 × 768 or higher)
 - Colors: 8 bit or higher (16 bit recommended)
 - USB connector (Hi-Speed USB is recommended)
 - Internet Explorer 7 or later
 - Windows Media Player 11 for Windows XP and Windows Vista, Windows Media Player 12 for Windows 7
 - Broadband Internet connection is required to use Electronic Music Distribution (EMD) or to visit the web site.
- We do not guarantee operation for all computers even if they meet the above System Requirements.
Not supported by the following environments:
 – Personally constructed computers or operating systems
 – An environment that is an upgrade of the original manufacturer-installed operating system
 – Multi-boot environment
 – Multi-monitor environment
 – Macintosh
- Design and specifications are subject to change without notice.

Symptom	Cause/Remedy
The player cannot charge the battery.	<ul style="list-style-type: none"> • The player is not connected to a USB connector on your computer properly. <ul style="list-style-type: none"> → Disconnect the player, and then reconnect it. • The battery is charged in an ambient temperature out of the range of 5 °C (41 °F) to 35 °C (95 °F). <ul style="list-style-type: none"> → You cannot charge the battery when icon appears. Charge the battery in an ambient temperature of 5 °C (41 °F) to 35 °C (95 °F). • The computer is not on. <ul style="list-style-type: none"> → Turn on the computer. • Your computer has entered Sleep or Hibernation status. <ul style="list-style-type: none"> → Release the computer from Sleep or Hibernation status.
[CONNECTED USB] does not appear when the player is connected to the computer.	<ul style="list-style-type: none"> • The player’s USB connector is not connected to a USB connector on your computer properly. <ul style="list-style-type: none"> → Disconnect the player, and then reconnect it. • A USB hub is being used. <ul style="list-style-type: none"> → Connect the player directly to a USB connector, as connection via a USB hub may not work. However, a USB hub that supplies power can be used. • Another application is running on the computer. <ul style="list-style-type: none"> → Disconnect the player, wait a few minutes, and reconnect it. If the problem persists, disconnect the player, restart the computer, and then reconnect the player. • The USB connector on your computer may have a problem. <ul style="list-style-type: none"> → Connect the player to another USB connector on your computer. • The remaining battery power is insufficient. <ul style="list-style-type: none"> → Charge the battery by connecting the player to a running computer for at least 5 minutes. When charging a depleted battery, the power illuminator blinks clockwise and nothing appears in the display.
The player becomes unstable while it is connected to the computer.	<ul style="list-style-type: none"> • A USB hub is being used. <ul style="list-style-type: none"> → Connect the player directly to a USB connector, as connection via a USB hub may not work. However, a USB hub that supplies power can be used.

To initialize (format) the player

You can format the memory of the player. If the memory is formatted, all shortcut icons and files including the User Guide (HTML document) will be erased and all setting values returned to their defaults. Be sure to verify the files stored in memory prior to formatting and export any necessary files to the hard disk of your computer or other device beforehand.

- 1 Press and hold the BACK/HOME button until the Home menu appears.**
- 2 Select [Settings] – [Initialize] – [Format] – [OK], in this order.**
Rotate the shuttle switch to select the item, and then press the **▶||** button to confirm. After selecting [OK] and confirming, [FORMATTING...] appears and formatting starts. When formatting is complete, [COMPLETE] appears.

Note

- Do not format the memory of the player in Windows Explorer. If you format the player in Windows Explorer accidentally, do it again on the player.
- If you format the memory of the player by accident, download the User Guide (HTML document) from the web site mentioned in “For the latest information.”

Precautions

- About the headphones**
- Avoid playing the unit at so loud a volume that extended play might affect your hearing.
 - At a high volume outside sounds may become inaudible. Avoid listening to the unit in situations where hearing must not be impaired, for example, while driving or cycling.
 - As the supplied headphones are of open-air design, sounds go out through the headphones. Remember not to disturb those close to you.

Do not expose the batteries (battery pack or batteries installed) to excessive heat such as sunshine, fire or the like for a long time.

Rated current consumption 500 mA

For users in France

When replacing the headphones/earphones, please refer to the model of the headphones/earphones adapted to your unit that appears below.
MDR-E804

At high volume, prolonged listening to the personal audio player can damage the user’s hearing.



Program ©2011 Sony Corporation
Documentation ©2011 Sony Corporation

For the latest information

If you have any questions or issues with a Sony product, or would like information on compatible items with a Sony product, visit the following Web sites.
 For customers in the USA: <http://www.sony.com/walkmansupport>
 For customers in Canada: <http://www.sony.ca/ElectronicsSupport/>
 For customers in Europe: <http://support.sony-europe.com/DNA>
 For customers in Latin America: <http://www.sony-latin.com/index.crp>
 For customers in other countries/regions: <http://www.sony-asia.com/support>
 For customers who purchased the overseas models:
<http://www.sony.co.jp/overseas/support/>

