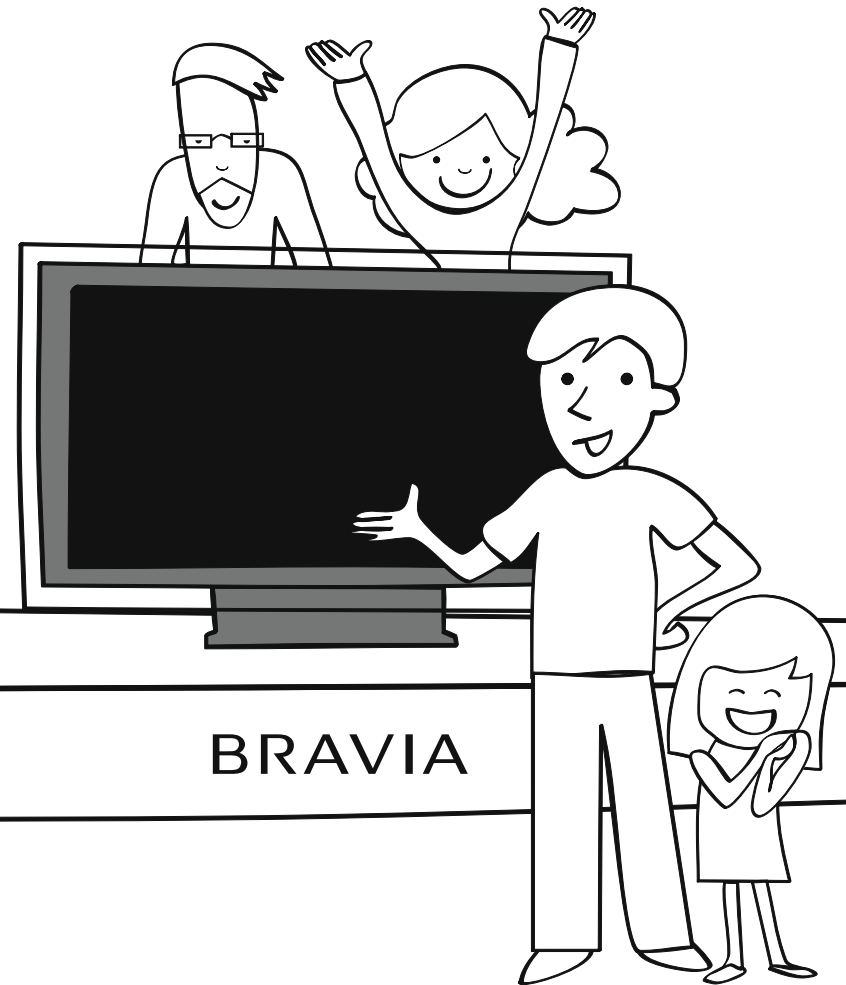


**BRAVIA**

Sony Electronics Asia Pacific Pte. Ltd.

**SONY**



**BRAVIA**

**BRAVIA**

**SERVICE CARE CARD**



Dear Valued Customer,

We congratulate you for choosing Sony's BRAVIA model and we welcome you to enjoy the Sony experience.

- This booklet will provide you some basic understanding of Sony's BRAVIA model's key features and its connectivity to external equipments.
- For more details, please refer to the supplied Instruction Manual or you may also visit your local Sony Support website.

If you still need any technical assistance, please contact your local Sony Service Centre.

We hope you will enjoy the wonderful performance of Sony BRAVIA.

# Contents

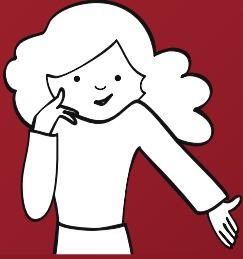
## General Information Of BRAVIA

	Page
1. Picture Quality	1
2. Remote Control Sensitivity	4
3. LCD TV Gets Hot	5
4. Precautions On Handling LCD TV	6
5. Connectivity (DVD)	7
6. Connectivity (PC)	8
7. Connectivity (HDMI™)	9
8. HDMI™ - CEC connectivity	10

## Specific Features And Functions Of BRAVIA

1. Auto Tuning	12
2. Manual Tuning	13
3. Program Sorting	14
4. Viewing Settings	15
5. Brightness Adjustment	16
6. Power Saving Mode	18
7. Display Information	19
8. MPEG Noise Reduction	20

## Picture Quality



My picture is not clear and having lot of dots, lines and hazy. How can I improve the picture quality?

Possible causes are:

- i. Antenna installation.
- ii. Antenna location.
- iii. Signal distribution.

Consult a qualified antenna-installer before approaching Sony Service Centre.



Why is the picture quality of LCD TV crystal clear when played back by some equipments?

Possible reasons are:

- i. Playback pictures are recorded in **High Definition (HD)** format.
- ii. These pictures are played back by HD players such as **Blu-ray Disc player, HD camera or HD Game console.**

Play back from VCR, DVD players are mainly **Standard Definition (SD)** format.

HD pictures are **3 times** clearer than SD pictures. Refer to the pictures showing picture quality differences between SD & HD.

Standard Definition (SD) - 4:3 Ratio



High Definition (HD) - 16:9 Ratio



## Picture Quality



What is the difference between 'Full HD' and 'HD Ready'?

The basic difference is the picture clarity in the LCD TV. The picture clarity (resolution) is measured in number of Pixels.

- Full HD offers 2 Mega Pixels (1920 x 1080) resolution.  
The higher the pixels, the better the resolution and capability of displaying finer details.
- HD Ready offers 1 Mega Pixel (1366 x 768) resolution.

Does your TV has this label?



You can enjoy Full HD games (e.g. **PLAYSTATION®3**).

You can view Full HD pictures from HD camcorders (e.g. **HD Handycam®**).

You can playback Full HD movies from HD players (e.g. **Blu-ray player**).

You can receive Full HD digital reception from a digital tuner/set top box.



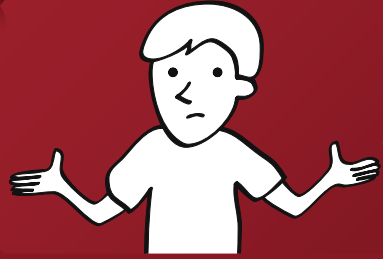
What is the recommended interface to connect Full HD to HD Devices ?

High Definition Multimedia Interface (HDMI™) is the standard interface to connect other HD devices to BRAVIA. HDMI™ offers:

- High bandwidth for all signal transmission between HD devices.
- Transfer of uncompressed audio/video signal between HD devices.









## Picture Quality



What are the common connectivity available to LCD TV? Which is the best connectivity?

Refer below table for commonly available connectivity to LCD TV and other equipment.

Picture Quality	Name	Sockets/Ports	Signal Transmitted	Separate audio connection required or not?
Best Quality	HDMI™ (High Definition Multi Media Interface)		Picture + Sound	No
↑ Picture Quality Performance ↓	DVI (Digital Video Interface)		Picture	Yes
	Component Video		Picture	Yes
	S-Video		Picture	Yes
	Composite Video		Picture	Yes
	Normal Quality	RF/Coaxial		Picture + Sound

## Remote Control Sensitivity



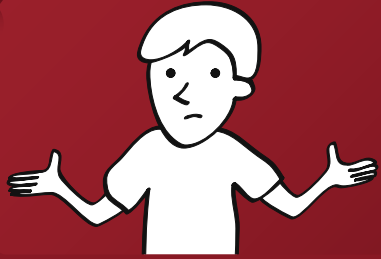
How can I prevent the remote control from operating intermittently?

Follow below actions:

- Aim remote control towards remote commander sensor location on the TV.
- Remove the items blocking the sensor.
- Replace batteries if needed.



## Why LCD TV is getting too warm?

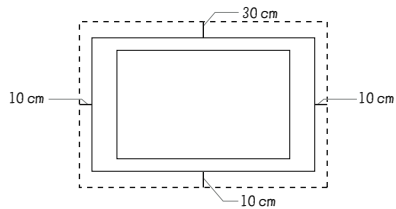


LCD TV generates small amount of heat which is dissipated via the ventilation holes.

It is recommended:

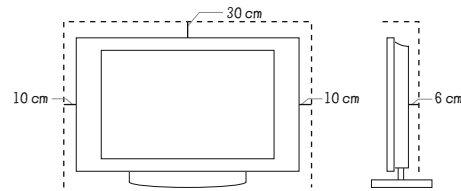
- Never cover the ventilation holes.
- Leave some space clearance around the LCD TV as shown in the pictures.

### Installed on the wall



Leave at least this space clearance around the set

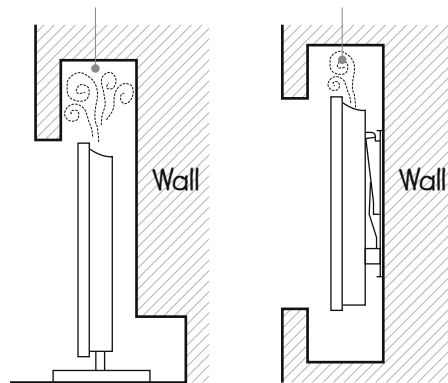
### Installed with stand



Leave at least this space clearance around the set

- LCD TV installed in Built-in cabinet must have sufficient ventilation.

### Air Circulation is blocked



Note: Built-in protection circuit will automatically switch off the unit if it is hotter than normal.

## Precautions On Handling LCD TV

### How can I safely transport LCD TV?



Follow below precautions.

- Disconnect all the cables.
- Minimum 2 persons to carry the TV.
- DO NOT stress/press on the LCD panel.
- Hold firmly on the bottom (as shown).
- No jolts or vibration.



### How can I prevent panel damage?



Follow below precautions.

- DO NOT push or scratch the screen.
- DO NOT throw any objects on the screen.
- Move slowly to adjust the angle of TV.
- Wipe gently with a soft cloth moistened with mild detergent.
- Do not use cleaning agents such as Alcohol, Thinner, Acid cleaner etc..



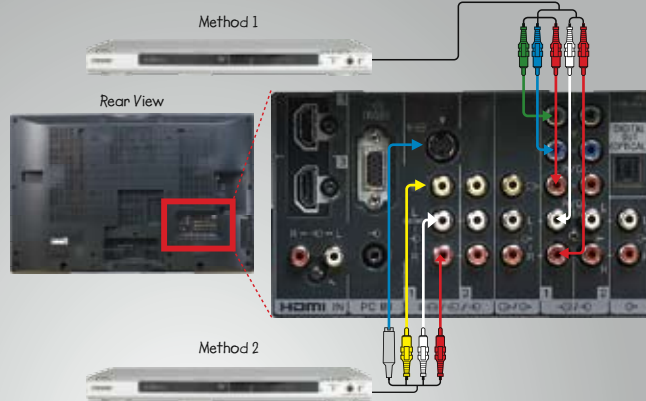
## How can I connect LCD TV to DVD player?

Follow below steps to connect DVD player to LCD TV.

### Step 1:

Method 1:  
Connect to Component Video input.

Method 2:  
Connect to Composite Video / S-Video inputs.



### Step 2:

- i. Press "MENU".
- ii. Press  $\downarrow/\uparrow$  to select "External Inputs" option and press  $\oplus$ .
- iii. Press  $\downarrow/\uparrow$  to select "HD/DVD 1" option (Method 1) and press  $\oplus$ .  
Or Select "Video 1" option (Method 2) and press  $\oplus$ .
- iv. DVD logo appears and then play DVD.



Note: Connection through Component Video gives better picture quality.  
Choose HD/DVD1, HD/DVD 2 or whichever input is available for method 1 connection.  
Choose Video 1, Video 2 or whichever input is available for method 2 connection.

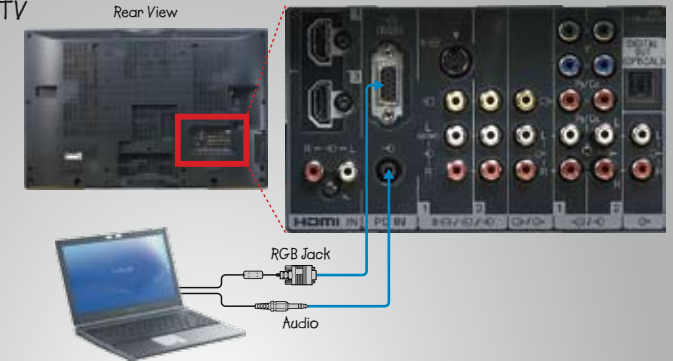


## How can I connect LCD TV to PC?

Follow below steps to connect PC to LCD TV.

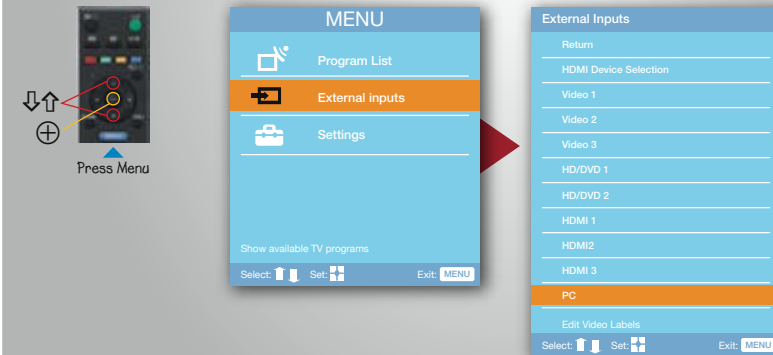
### Step 1:

Connect the PC to the TV through PC input.



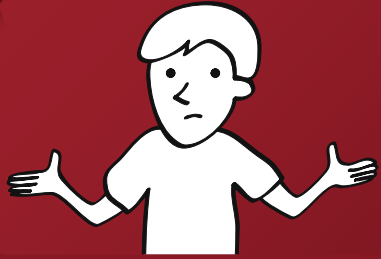
### Step 2:

- i. Press "MENU".
- ii. Press  $\downarrow/\uparrow$  to select "External Inputs" option and press  $\oplus$ .
- iii. Press  $\downarrow/\uparrow$  to select "PC" option and press  $\oplus$ .



Please refer to the instruction manual to check the location of the remote commander sensor on the TV.

## Connectivity (HDMI)

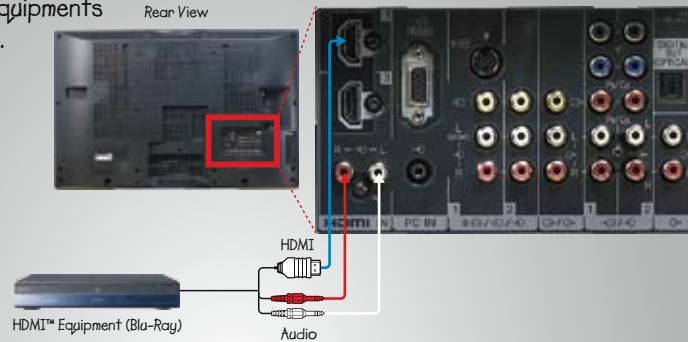


How can I connect LCD TV to other HDMI™ equipments?

Follow below steps to connect HDMI™ equipments to LCD TV.

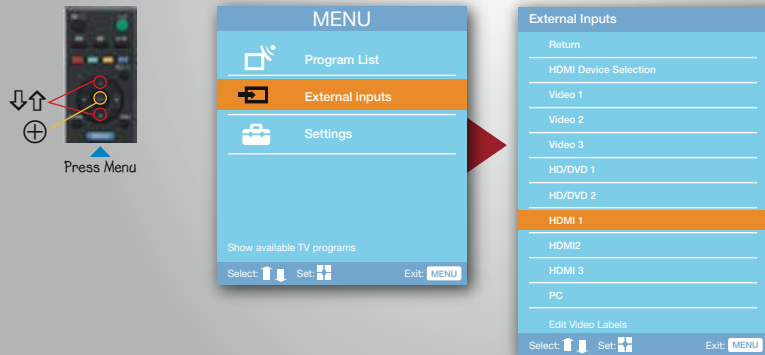
### Step 1:

Use HDMI™ connector to connect to HDMI™ equipments to LCD TV as shown.



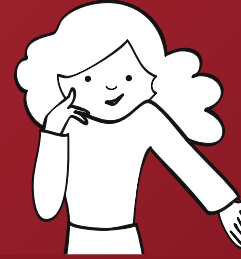
### Step 2:

- Press "MENU".
- Press  $\downarrow/\uparrow$  to select "External Inputs" option and press  $\oplus$ .
- Press  $\downarrow/\uparrow$  to Select "HDMI 1" option and press  $\oplus$ .



Note: HDMI™ control must be set on both the TV and external equipment .  
Choose HDMI 1, HDMI 2 or whichever input is available for connection.

## HDMI-CEC Connectivity



How can I set up HDMI™ - CEC?

Follow below steps to connect multiple HDMI™ equipments to LCD TV.

### Step 1:

Use HDMI™ connector to connect to HDMI™ equipments to LCD TV as shown.



### Step 2:

- Press "MENU".
- Press  $\downarrow/\uparrow$  to select "Settings" Option and press  $\oplus$ .



Continue to step 3



How can I set up  
HDMI™ - CEC?

Continued from page 10

### Step 3:

- i. Press  $\downarrow/\uparrow$  to select "HDMI setup" option and press  $\oplus$ .
- ii. Press  $\downarrow/\uparrow$  to turn "ON" option and press  $\oplus$ .
- iii. Power on all the connected devices.
- iv. Press  $\leftarrow/\rightarrow$  to select "OK" option and press  $\oplus$ .
- v. Wait for the scanning to complete.

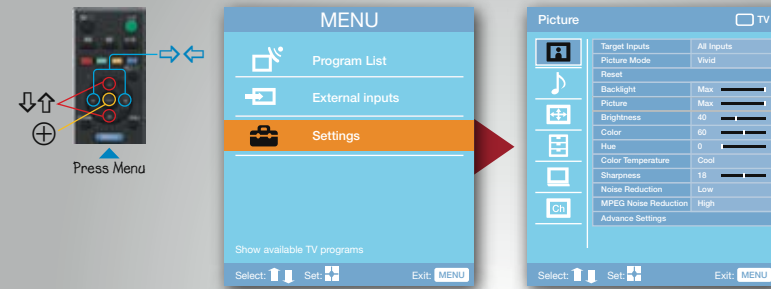


How can I  
perform Auto Tuning

Follow below steps to perform Auto Tuning.

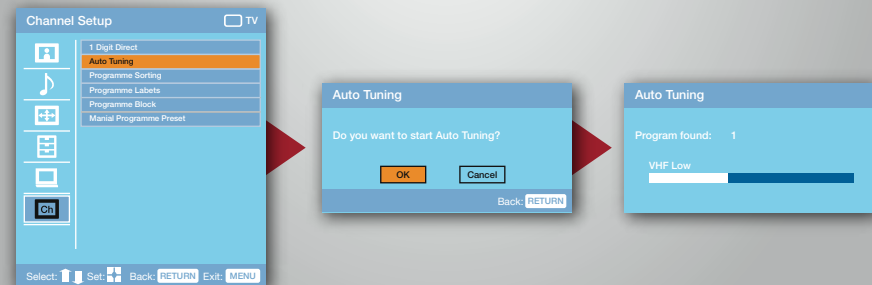
### Step 1:

- i. Press "MENU"
- ii. Press  $\downarrow/\uparrow$  to select "Settings" option and press  $\oplus$ .
- iii. Press  $\downarrow/\uparrow$  to select "Channel Set Up" option and press  $\oplus$ .

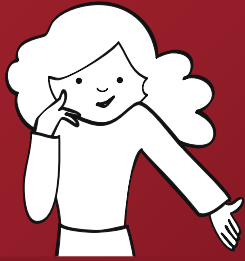


### Step 2:

- i. Press  $\downarrow/\uparrow$  to select "Auto Tuning" option and press  $\oplus$ .
- ii. Press  $\leftarrow/\rightarrow$  to select "OK" button and press  $\oplus$ .
- iii. Press "MENU" to exit the menu screen, once tuning is completed.



# Manual Tuning

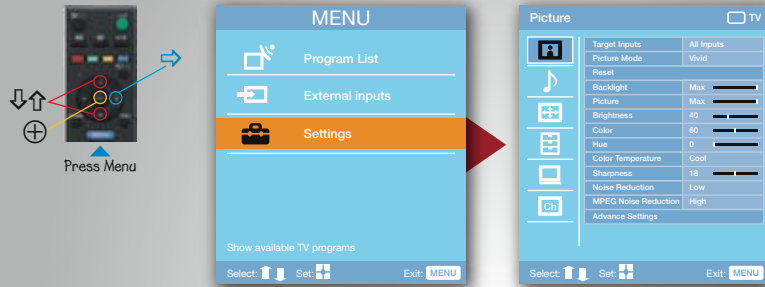


How can I tune the channels manually?

Follow below steps to perform Manual Tuning.

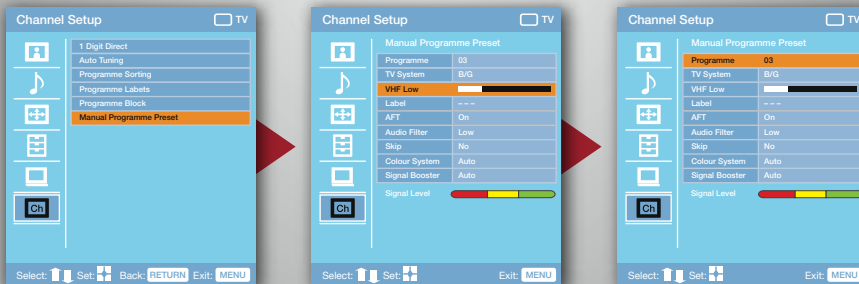
## Step 1:

- i. Press "MENU".
- ii. Press  $\downarrow\uparrow$  to select "Settings" option and press  $\oplus$ .
- iii. Press  $\downarrow\uparrow$  to select "Channel Set Up" option and press  $\oplus$ .



## Step 2:

- i. Press  $\downarrow\uparrow$  to select "Manual Programme preset" option and press  $\oplus$ .
- ii. Press  $\downarrow\uparrow$  to select "VHF Low" button and press  $\oplus$ .
- iii. Press  $\rightarrow$  to begin Manual Tuning.
- iv. Press  $\oplus$  to stop Manual Tuning.
- v. Press  $\downarrow\uparrow$  to highlight the program and press  $\oplus$ .



# Program Sorting

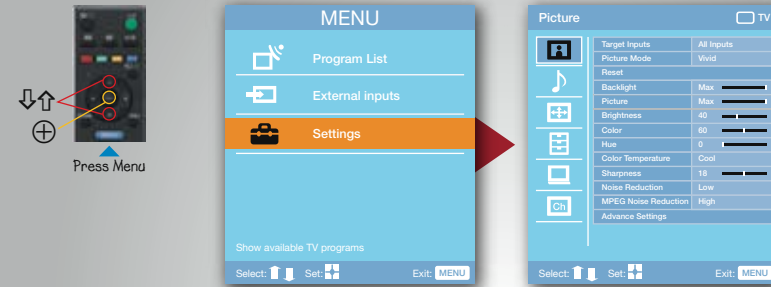


How can I sort programs?

Follow below steps to sort programs.

## Step 1:

- i. Press "MENU".
- ii. Press  $\downarrow\uparrow$  to select "Settings" option and press  $\oplus$ .
- iii. Press  $\downarrow\uparrow$  to select "Channel Set Up" option and press  $\oplus$ .

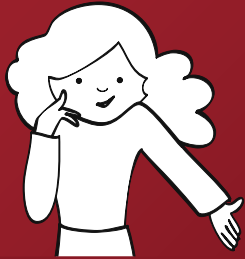


## Step 2:

- i. Press  $\downarrow\uparrow$  to select "Program Sorting" option and press  $\oplus$ .
- ii. Press  $\downarrow\uparrow$  to select program numbers and press  $\oplus$ .
- iii. Press "MENU" to exit.



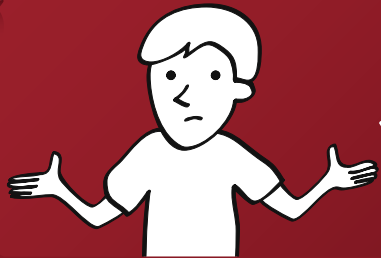
## Viewing Settings



What are the preferred picture settings?

These are 3 recommended settings as below:

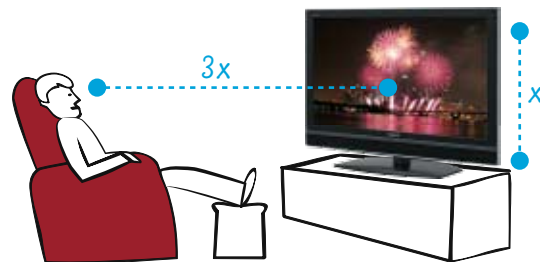
- i. Suitable for standard picture: **Standard Mode.**
- ii. Best for watching movie at home: **Cinema Mode.**
- iii. Best for shop front display: **Vivid Mode.**



What is the best viewing distance from the LCD TV?

Best viewing distance depends on the screen size. Refer to the table below for recommended viewing distance.

Screen Size	Viewing Distance Range
26 Inch	1 metre
32 inch	1.2 metre
37 inch	1.4 metre
40 inch	1.5 metre
46 inch	1.7 metre
52 inch	2 metre



Recommended distance for viewing **High Definition** picture is **3 times** of TV vertical screen size.  
Recommended distance for viewing **Standard Definition** picture is **5 times** of TV vertical screen size.

## Brightness Adjustment

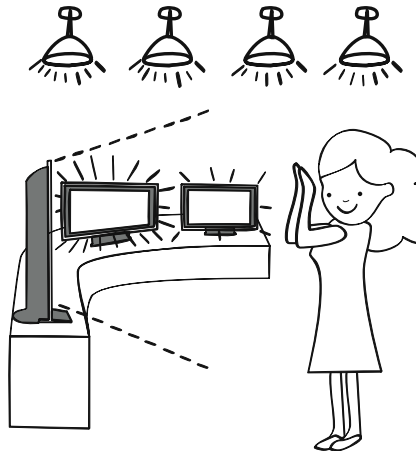


I notice a change in brightness between different LCD TVs. Is this normal?

When judging the brightness certain factors are to be considered

### RECOMMENDED BRIGHTNESS:

- Check the LCD TV is capable of producing bright yet natural images. Look for an image that shows a good level of detail in dark areas without washing-out the rest of the image by being too bright.
- Consider the brightness of the surrounding environment. This always affects the perceived picture brightness of the LCD TV. A LCD TV will appear less bright or too bright in different rooms because light differs in each scenario.



### ABOUT BRAVIA:

- The BRAVIA LCD TV is equipped with an **Auto Light Sensor**. This is an **Automatic backlight control** system which will automatically adjust its brightness according to lighting conditions.
- This helps to provide the optimum picture quality in any environment.
- This helps avoid eye-strain while watching TV as the picture brightness will follow the lighting of the room accordingly.
- With the **Auto Light Sensor** feature, there may be savings on your electrical costs because this system reduces excessive brightness which then optimizes its power consumption.

# Brightness Adjustment



How can I adjust TV brightness manually?

Follow below steps to adjust brightness.

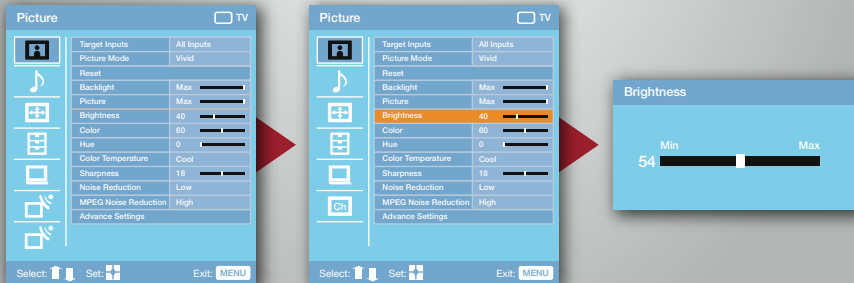
## Step 1:

- i. Press "MENU".
- ii. Press  $\downarrow\uparrow$  to select "Settings" option and press  $\oplus$ .



## Step 2:

- i. Press  $\downarrow\uparrow$  to select "Picture" option and press  $\oplus$ .
- ii. Press  $\downarrow\uparrow$  to select "Brightness" option and press  $\oplus$ .
- iii. Press  $\downarrow\uparrow$  to select required level and press  $\oplus$ .
- iv. Press "MENU" to exit.



# Power Saving Mode

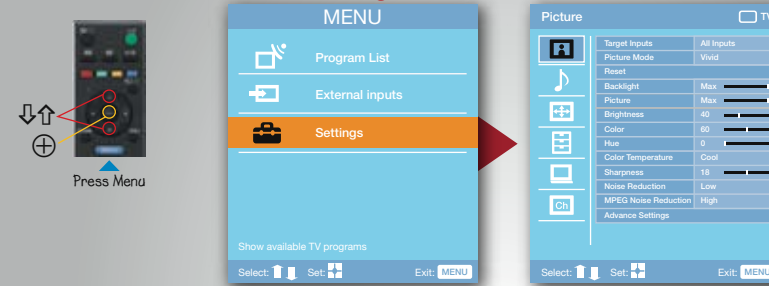


Why is the picture darker than usual?

The picture will be darker if the unit is in power saving mode. Follow below steps to switch off power saving mode.

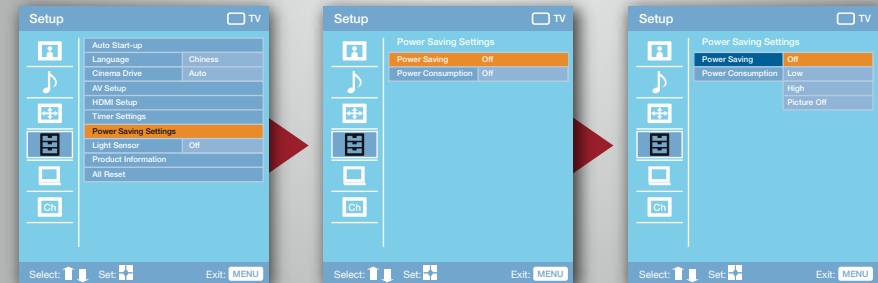
## Step 1:

- i. Press "MENU".
- ii. Press  $\downarrow\uparrow$  to select "Settings" option and press  $\oplus$ .



## Step 2:

- i. Press  $\downarrow\uparrow$  to select "Set Up" option and press  $\oplus$ .
- ii. Press  $\downarrow\uparrow$  to select "Power Saving Setting" option and press  $\oplus$ .
- iii. Press  $\downarrow\uparrow$  to select "Off", "Low", "High" or "Picture Off" and press  $\oplus$ .



# Display Information



How can I remove the "gray rectangle" or "clock" in the bottom left corner of the screen?

Follow the below steps to adjust display information.

Press the display info (i+) button



In "AV input mode", the display info (i+) button will have the following function.



Press once:

Displays information such as current channel number and screen mode such as Wide Mode. (Channel number or AV input label will remain)



Press twice:

Removes channel number or AV input label and displays "Clock" in the lower right corner of the screen. If the Clock is not set will display "--/--".



Press thrice:

Removes clock information from screen. (Returns to normal viewing mode without any display information).

# MPEG Noise Reduction

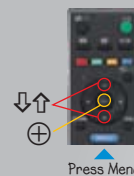


How can I reduce MPEG noise? (mosquito type noise due to blocks in picture)

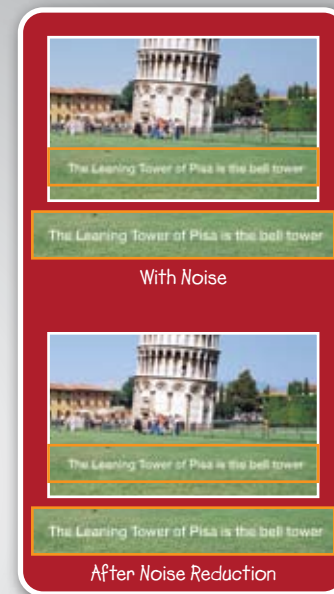
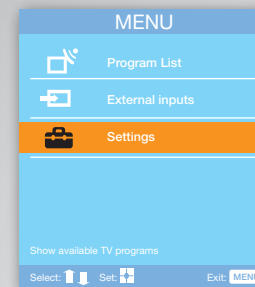
Follow below steps to adjust brightness.

Step 1:

- i. Press "MENU".
- ii. Press  $\downarrow/\uparrow$  to select "Settings" option and press  $\oplus$ .



Press Menu



Step 2:

- i. Press  $\downarrow/\uparrow$  to select "Picture" option and press  $\oplus$ .
- ii. Press  $\downarrow/\uparrow$  to select "MPEG Noise Reduction" option and press  $\oplus$ .
- iii. Press  $\downarrow/\uparrow$  to select "Low" option and press  $\oplus$ .

